

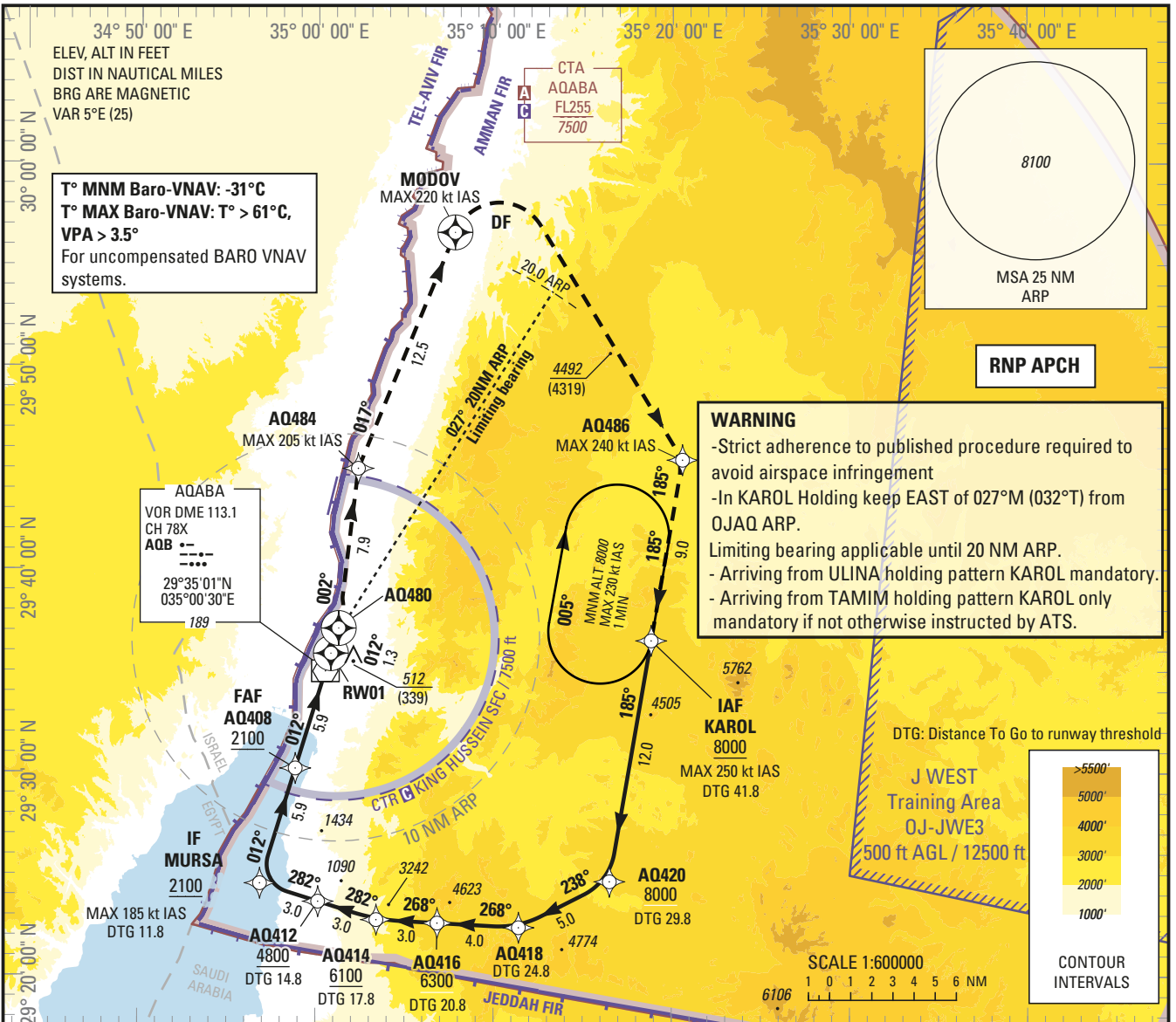
**INSTRUMENT
APPROACH
CHART — ICAO**

AERODROME ELEV 173 ft
HEIGHTS RELATED TO
THR RWY 01 — ELEV 173 ft

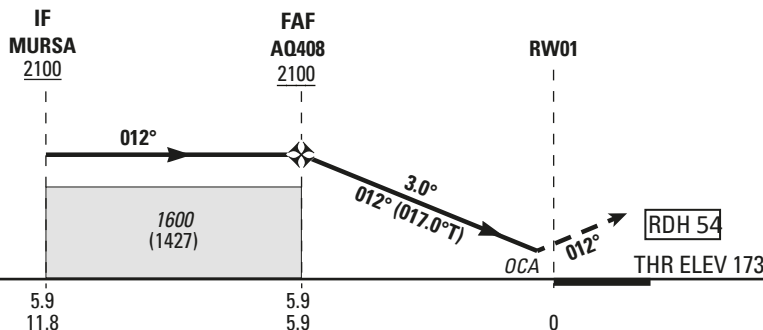
AQABA/King Hussein Intl. (OJAQ)

King Hussein Tower 119.2
Aqaba Sector 132.425

RNP Z RWY 01



CHANGE: MISSED APP TEXT & RDH



OCA (H)	A	B	C	D
LNAV/VNAV 2.5%	960 (780)	970 (800)	990 (820)	1020 (840)
LNAV/VNAV 3.0%	490 (310)	500 (320)	520 (350)	550 (370)
LNAV/VNAV 4.0%	470 (300)	480 (310)	510 (330)	540 (370)
LNAV/VNAV 5.0%	460 (290)	470 (300)	500 (330)	530 (360)
CIRCLING	NOT AUTHORIZED			

Holding instruction

Path Descriptor	Waypoint Identifier	Inbound Course °M (°T)	Leg Distance	Turn direction	Minimum Altitude (ft/FL)	Maximum Altitude (ft/FL)	Speed Limit (kt)	Magnetic Variation	Navigation Specification
Hold	KAROL	185 (190.0)	1 min	R	8000	14000	230	+5.0	RNP 1

Route Description: IAC RNP Z RWY01

RNP Z RWY01											
Serial Number	Path Descriptor	Waypoint Identifier	Fly - Over	Course °M (°T)	Magnetic Variation	Distance (NM)	Turn direction	Altitude (ft/FL)	MAX IAS (kt)	VPA/TCH (°/ft)	Navigation Accuracy (NM)
10	IF	KAROL	-	-	-	-	-	+8000	-250	-	RNP APCH
20	HF	KAROL	Y	185 (190.0)	+5.0	-	R	+8000	-230	-	RNP APCH
30	TF	AQ420	-	185 (189.7)	+5.0	12.0	-	+8000	-	-	RNP APCH
40	TF	AQ418	-	238 (243.0)	+5.0	5.0	-	-	-	-	RNP APCH
50	TF	AQ416	-	268 (273.1)	+5.0	4.0	-	+6300	-	-	RNP APCH
60	TF	AQ414	-	268 (273.0)	+5.0	3.0	-	+6100	-	-	RNP APCH
70	TF	AQ412	-	282 (287.3)	+5.0	3.0	-	+4800	-	-	RNP APCH
80	TF	MURSA	-	282 (287.3)	+5.0	3.0	-	+2100	-185	-	RNP APCH
90	TF	AQ408	-	012 (017.0)	+5.0	5.9	-	+2100	-	-	RNP APCH
100	TF	RW01	Y	012 (017.0)	+5.0	5.9	-	@221	-	-3.0/ 54	RNP APCH
110	CF	AQ480	Y	012 (017.0)	+5.0	1.3	-	-	-	-	RNP APCH
120	TF	AQ484	-	002 (006.7)	+5.0	7.9	-	-	-205	-	RNP APCH
130	CF	MODOV	Y	017 (022.1)	+5.0	12.5	-	-	-220	-	RNP APCH
140	DF	AQ486	-	-	-	-	R	-	-240	-	RNP APCH
150	TF	KAROL	-	185 (189.7)	+5.0	9.0	-	+8000	-250	-	RNP APCH

Aeronautical Data Tabulation: IAC RNP Z RWY 01

WAYPOINT LIST		
Waypoint / Fix	Latitude	Longitude
KAROL	29°36'32.564"N	035°18'49.354"E
AQ420	29°24'41.101"N	035°16'30.258"E
AQ418	29°22'24.660"N	035°11'24.205"E
AQ416	29°22'37.448"N	035°06'49.897"E
AQ414	29°22'46.936"N	035°03'24.154"E
AQ412	29°23'40.603"N	035°00'07.431"E
MURSA	29°24'34.077"N	034°56'51.061"E
AQ408	29°30'13.514"N	034°58'49.395"E
RW01	29°35'53.005"N	035°00'47.980"E
AQ480	29°37'07.287"N	035°01'13.958"E
AQ484	29°44'59.158"N	035°02'17.945"E
MODOV	29°56'36.761"N	035°07'43.131"E
AQ486	29°45'26.121"N	035°20'34.032"E